

Pocket Guide

blueplanet NX3 series





! Safety notice

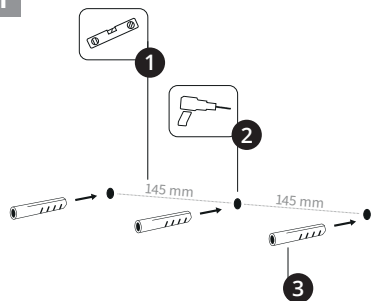
The inverters may only be installed by trained and authorized specialists. It is absolutely necessary to read the Operating and Installation instructions.

Manuals can be downloaded from our website at <https://kaco-newenergy.com>. The warnings and safety instructions which are provided in the manuals must be complied with entirely.

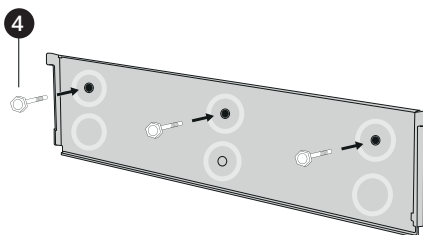
Installation



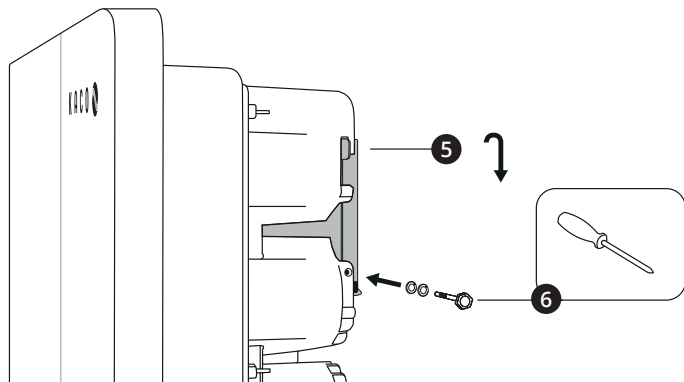
1



2

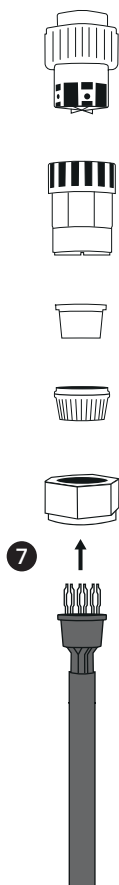


3

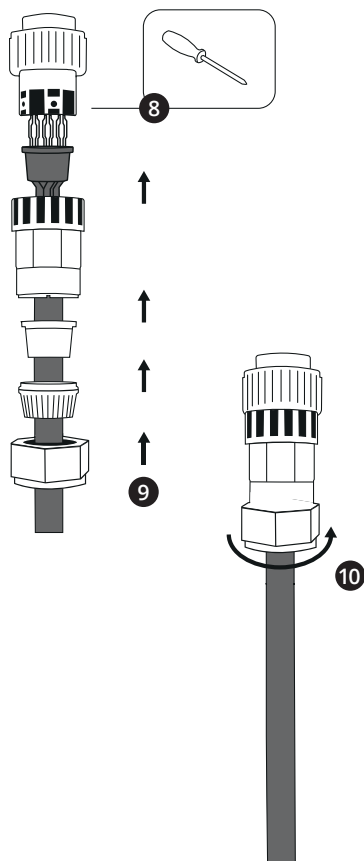




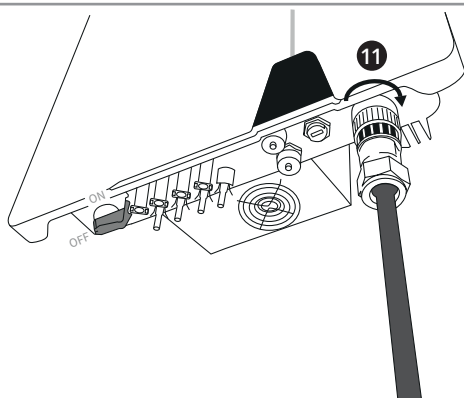
4



5

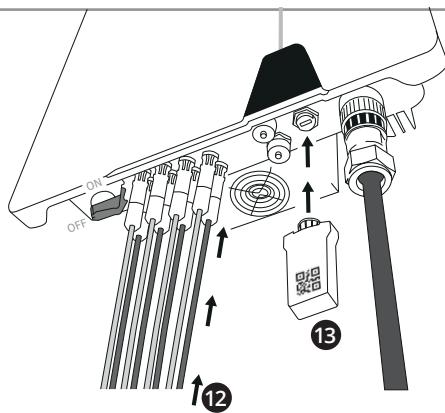


6

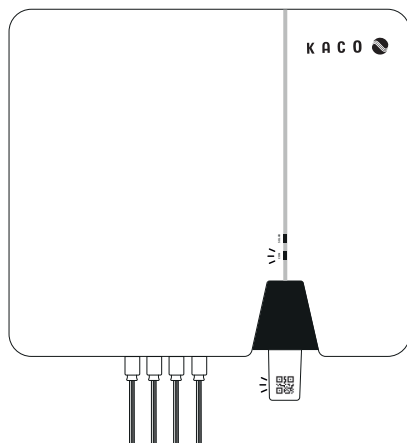
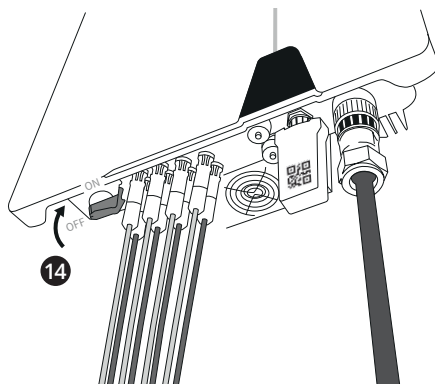




7



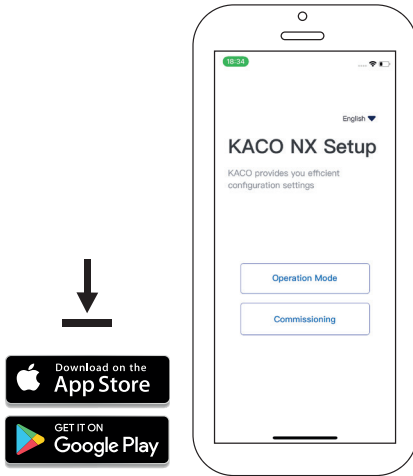
8



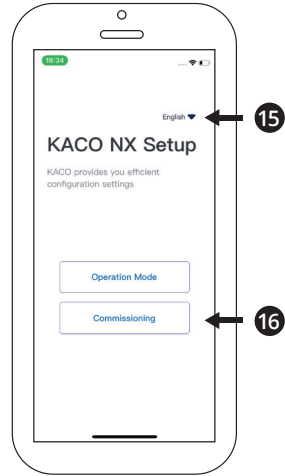
Commissioning



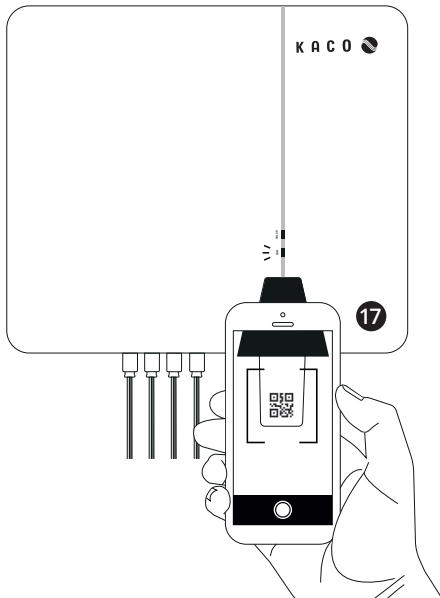
9



10

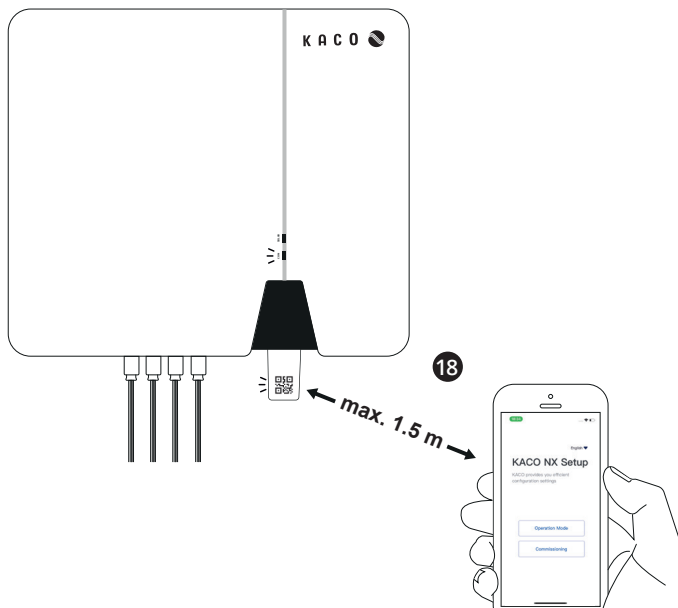


11

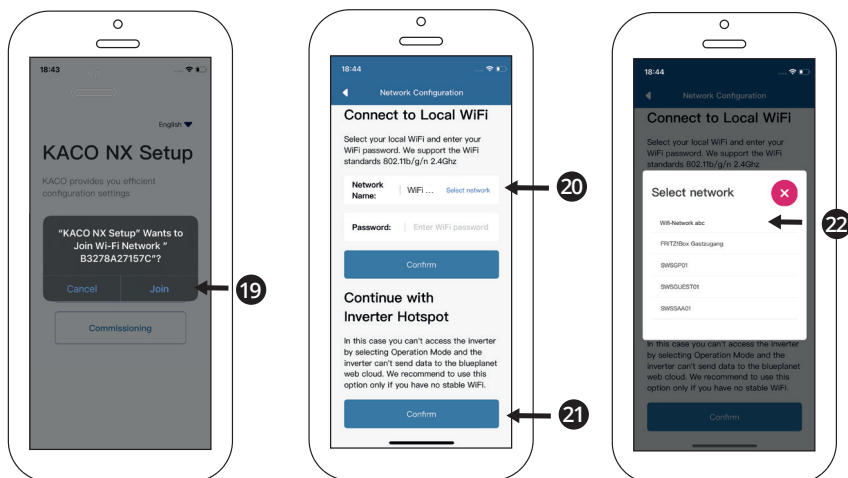




12



13

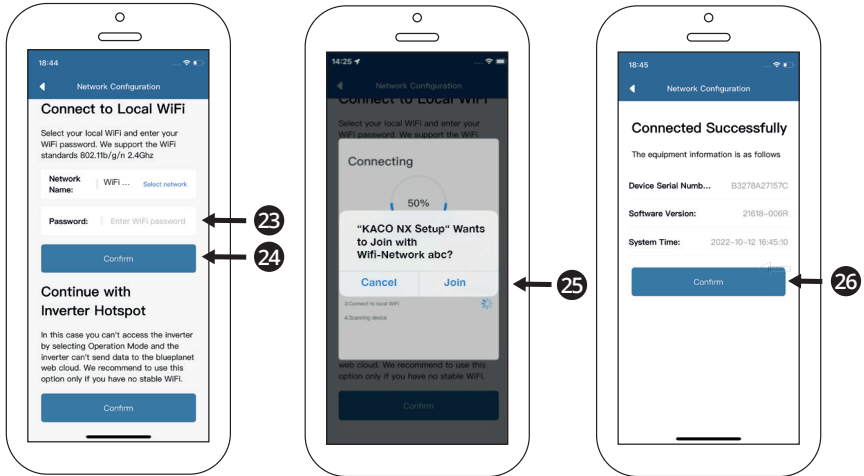


20 Recommended option, stable local WiFi is required.

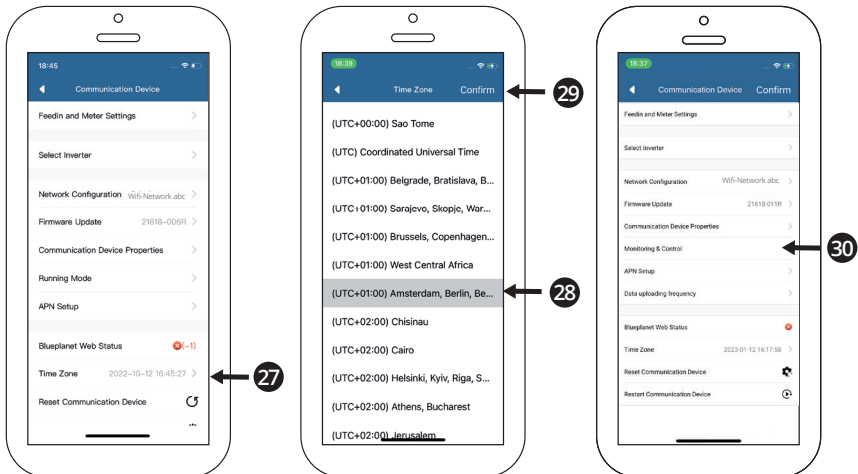
21 Alternative option if there is no local WiFi available. After clicking „confirm“ you can continue with step 27



14

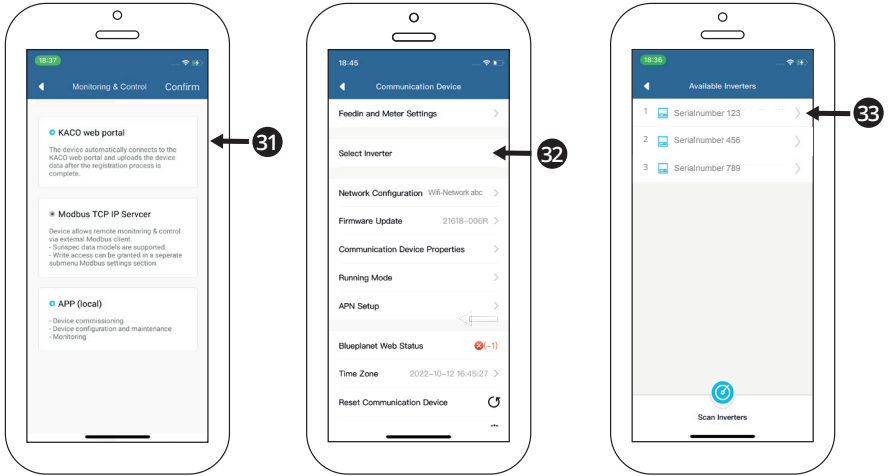


15

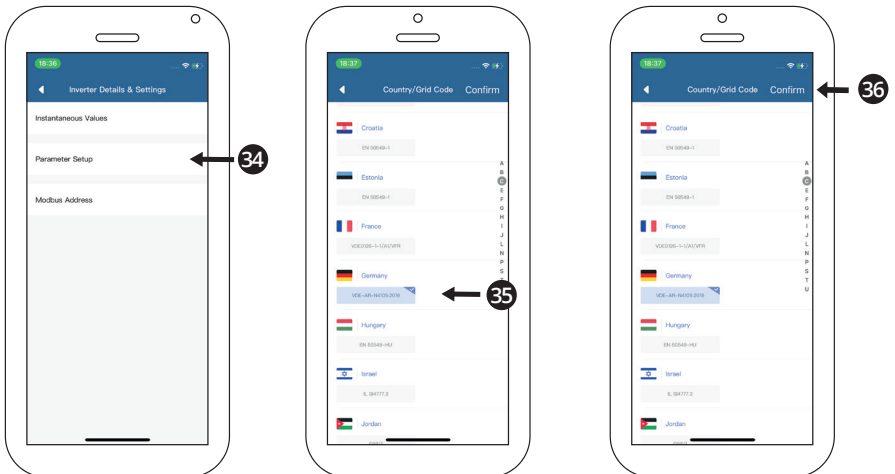




16



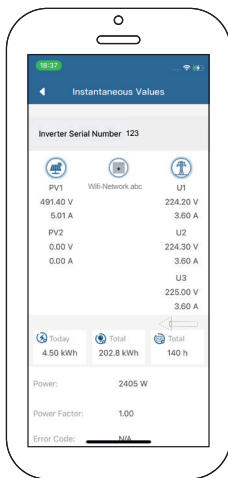
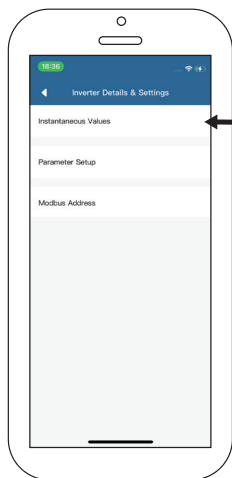
17





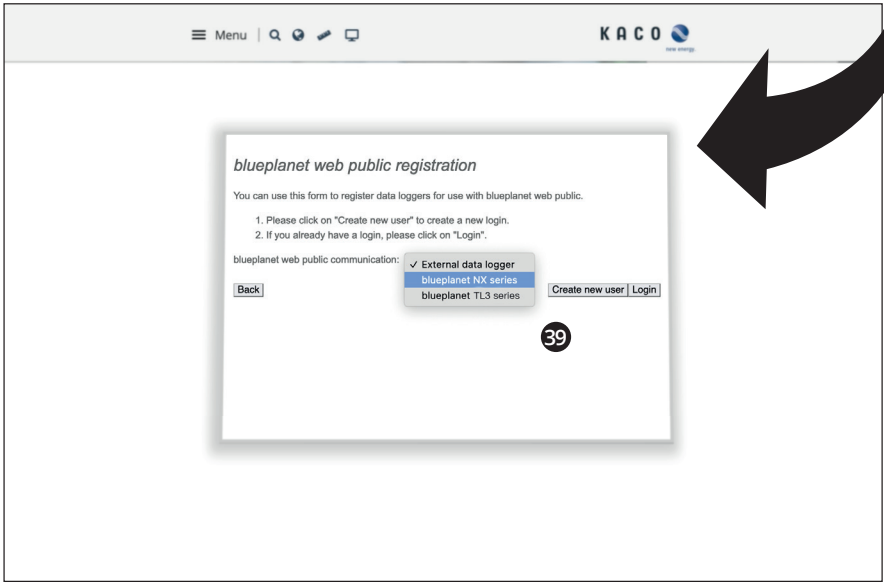
18

Check if your inverter feeds in.





19





20

Menu | Search | Social Media Icons | KACO new energy

blueplanet web public registration

You can use this form to register data loggers for use with blueplanet web public.

1. Please click on "Create new user" to create a new login.
2. If you already have a login, please click on "Login".

blueplanet web public communication: blueplanet NX series

Back Create new user Login

40

Menu | Search | Social Media Icons | KACO new energy

blueplanet web public registration

Change language: GB DE FR ES IT

KACO

blueplanet web public registration

▼ Data logger

Inverter serial number(s)*: 123

* Please enter the serial number of the inverter here. Up to 5 inverters can be registered in this registration process.

Continue

41

▼ User data

▼ System

☐ I have read the [General Terms and Conditions](#) and the [Data privacy statement](#) and accept them.


Submit information

41 Software Version > 2.0? Insert Wi-Fi stick serial number



21

Menu |

KACO 
blueplanet web public registration

Change language

▼ Data logger

Inverter serial number(s)*:

* Please enter the serial number of the inverter here. Up to 5 inverters can be registered in this registration process.

Continue

▶ User data


▶ System

☐ I have read the [General Terms and Conditions](#) and the [Data privacy statement](#) and accept them.

Submit information

42

Menu |

KACO 
blueplanet web public registration

Change language

▶ Data logger

▼ User data

Registration

E-mail*:
Password:
Repeat password:

* Note: Your e-mail address is also your user name.

Back

Continue

▶ System

☐ I have read the [General Terms and Conditions](#) and the [Data privacy statement](#) and accept them.

Submit information

43



22

Menu |

KACO new energy

KACO

blueplanet web public registration

Change language

Data logger

User data

Registration

E-mail*:

fam.sunshine@welovepv.de

Password:

Repeat password:

* Note: Your e-mail address is also your user name.

Back

Continue

System

☐ I have read the [General Terms and Conditions](#) and the [Data privacy statement](#) and accept them.

Submit information

44

Menu |

KACO new energy

System

System name:

Subsystem

Installed power:

25

Watt

System description*:

Site data

Map: ☒ On ☐ Off

Map ☒ Satellite

Centre card on marker

Longitude:

10.447983

Latitude:

51.163375

Adresse (optional):

Back

☐ I have read the [General Terms and Conditions](#) and the [Data privacy statement](#) and accept them.

Submit information

45



23

Menu |

KACO new energy

System

System name:

Installed power:

System description*:

Site data

Map: ☒ On ☐ Off

Map

Longitude:

Latitude:

Address (optional):

46

☒ I have read the [General Terms and Conditions](#) and the [Data privacy statement](#) and accept them.

Menu |

KACO new energy

System

System name:

Installed power:

System description*:

Site data

Map: ☒ On ☐ Off

Map

Longitude:

Latitude:

Address (optional):

☒ I have read the [General Terms and Conditions](#) and the [Data privacy statement](#) and accept them.

47



 Menu   

KACO
new energy


blueplanet web
pro or public - that is the question

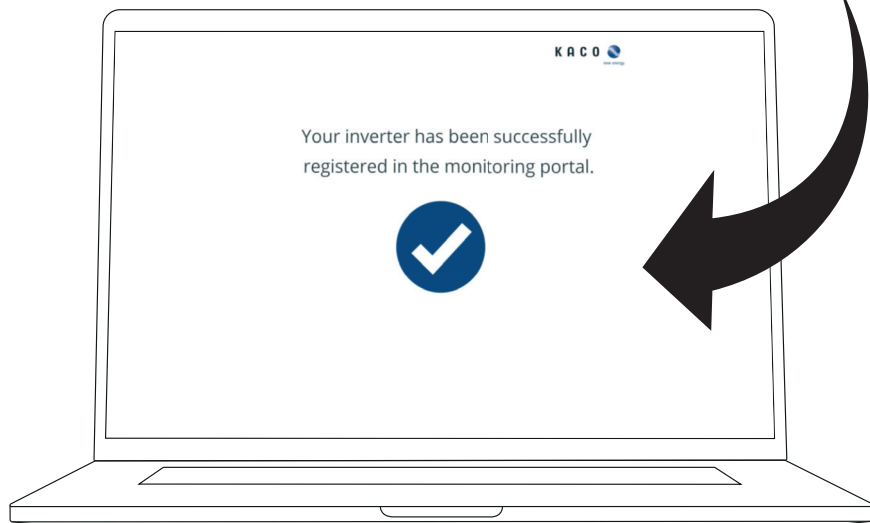


Find the right PV monitoring portal for you

blueplanet web pro
Our professional monitoring portal offers you detailed and clear system monitoring in a customizable environment. This helps you to minutely track the performance of your PV plant, to react quickly to abnormalities and to secure your investment.
[LOGIN BLUEPLANET WEB PRO](#)
Learn more about blueplanet web pro >>
[View demo plant >>](#)
Registration: Save the following PDF and send the completed form to web-registration@kaco-newenergy.de
[Download Registration>>](#)

blueplanet web public
Blueplanet web public is our online portal for the free monitoring of PV plants up to 100 kWp for newly registered users from December 1, 2018. It gives you concise information about the performance of your system any time from anywhere via the Internet.
[LOGIN BLUEPLANET WEB PUBLIC](#)
Learn more about blueplanet web public >>
[View demo plant >>](#)
Register your PV plant in blueplanet web public free of charge >>





blueplanet NX3 series

